

Excalibur

THE LONDON NEWSLETTER OF THE INLAND WATERWAYS ASSOCIATION

NUMBER 29, SPRING 2000

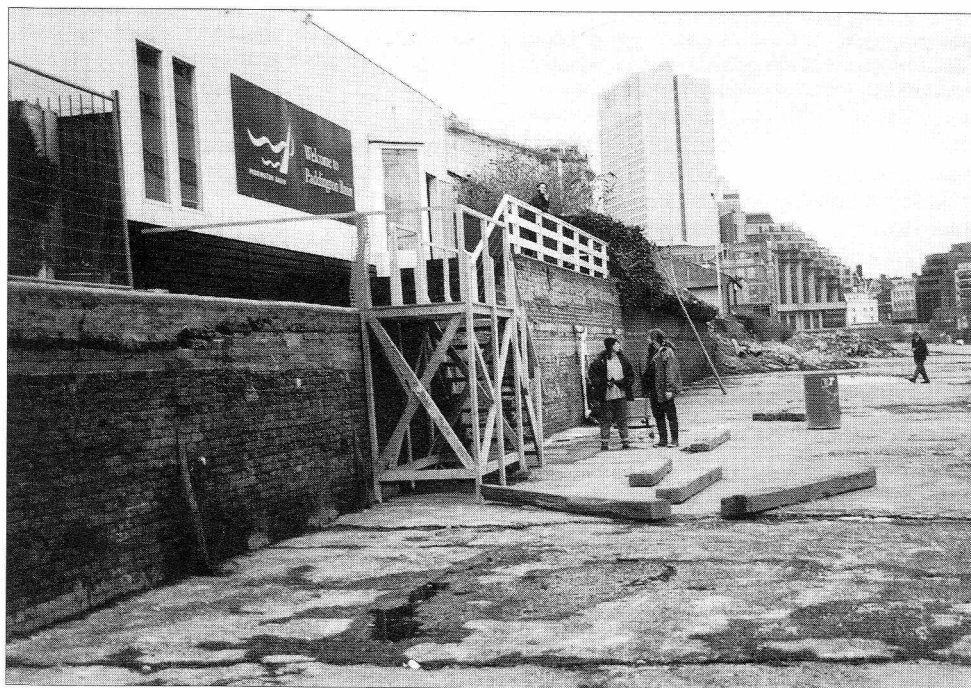
EDITOR : Mike Stevens, 333 Lyham Road, London SW2 5NS

'phone (020) 8674 9387

fax (020) 8674 3724

mobile 07850-665 102

e-mail michael.stevens@which.net



Paddington Basin is currently de-watered to be cleared of silt and have some changes made to the waterway wall in connection with development around the site.

PHOTO : Mike Stevens

Who's who in London IWA

☎ = answerphone

LONDON REGION

President

Iltyd Harrington JP, DL

Vice-Presidents

Dr Michael Essex-Lopresti
Arthur Farrand Radley, MBE

Chairman

Libby Bradshaw (020) 8874 2787 ☎
fax ditto, e-mail libby.bradshaw@cwcom.net
Ground floor flat, 61 West Side,
Wandsworth Common, London SW18 2ED
(also Chairman of Canalway Cavalcade)

Deputy Chairman

Ian Ferguson Mobile 07956-669573
Fax (020) 8533 5128

Secretary

vacant

Treasurer

Vernon Draper (020) 8668 5522
(also Middlesex Branch Chairman)

Committee members

Ron Bingham (020) 8855 3693
(Chairman of Planning & Navigation Cttee)
Dan Evans (020) 8560 1798 ☎
Marcus Jones mobile 07715-357593
Tim Lewis (020) 8367 6227 ☎
David Llewellyn (020) 8653 4862 ☎

(South London Branch Chairman)

Mike Stevens See details on front cover.
(Publicity Officer)

Michael Stimpson (01923) 770 425 ☎
(Lecturers Panel organiser)

Vacancy (N & E London Branch Chairman)

Official not on the Committee

Lewis Phillips (020) 8673 4412 ☎
(London Ring Plaques distribution)

Excalibur

Editor

Mike Stevens See details on front cover.

Editorial Assistant

Vacancy

Advertising manager

Robin Bishop

11 Lichfield Road, Cricklewood, NW2 2RE
'phone (020) 8452 2632 (evenings)
01276-63366 x236 (work)

MIDDLESEX BRANCH

Chairman

Vernon Draper (020) 8668 5522
121 St. Andrew's Road, Coulsdon, CR5 3HJ

Secretary

Mike Stimpson (work) (01923) 770 425
6 Norfolk Rd, Rickmansworth, Herts, WD3 1QE

Treasurer

Robin Bishop (0120) 8452 2632

Committee members

Stu Carrie (01895) 438 180
(Publicity Officer & Newsletter editor)

Sarah Escott (020) 8560 7347
(Plan/Nav representative)

Rosie Limming (01895) 252011
(Sales Officer)

NORTH & EAST LONDON BRANCH

Chairman

Vacancy. All correspondence to Tim
Lewis (see below) please.

Secretary

Vacancy

Treasurer

Tim Lewis (020) 8367 6227 ☎
6 Downs Road, Enfield, Middx, EN1 1PA.

Committee members

Debbie Lewis (020) 8367 6227 ☎
(Publicity Officer)

Roger Wilkinson (020) 8458 9476
(Membership Officer)

SOUTH LONDON BRANCH

Chairman

David Llewellyn (020) 8653 4862 ☎

Deputy Chairman & Membership Officer

David Young (020) 8654 3054 ☎

Secretary & Publicity Officer

Mike Stevens See details on front cover

Treasurer

Mary Llewellyn (020) 8653 4862 ☎
5 Cornwall Gardens, Tennyson Rd, SE25 5RZ.

Committee members

Libby Bradshaw (020) 8874 2787 ☎

Neville Munro (01322) 613 428 ☎

Lesley Pryde (020) 8679 9866

From the Editor

AN APOLOGY

I'm sorry that readers missed what was planned as a Christmas issue of *Excalibur*, but I was laid low with the 'flu and its aftermath at the crucial time. It certainly seems to have been a virulent bug this year.

GOODBYE AND THANK YOU

.. to Alison Smedley who has been Editorial Assistant on *Excalibur* since Issue 25, nearly two years ago. She and Rupert will have moved to Staffordshire by the time you read this, to live in a cottage whose land fronts onto both the Caldon Canal and its Leek Branch. A lot of us are green with envy.

Not only will Alison leave a gap in the *Excalibur* editorial team, but she also vacates the post of Region Secretary (after her second term of office in the job). She and Rupert have also been our Plan/Nav Committee's watchdogs on development proposals around Deptford Creek. So between them they leave a lot of slots to be filled. Alison is also a former Middlesex Branch Secretary.

We are grateful to them both for what they have done for London IWA over the past years and wish them all the best in their new home.

If there is anyone out there who would be willing to join the *Excalibur* team in Alison's place, please give me a ring (or an e-mail). One of the jobs that Alison did very effectively was researching the entries for the *Waterways Events* pages - a volunteer to take over that task would be particularly welcome. Another task for which it would be nice to have help is collecting the smaller items that make up the *Routes and Branches* and *On the Metreau* pages. To do either of these jobs really does require access to a PC, so that your finished material can reach me on disc (or e-mail), ready for me to do the final edit and place it on the page.

If there's anyone with a home PC who'd be interested in learning the layout side of work, using *Pagemaker*, with a view eventually to understudying me if I'm taken ill again, that would be even more welcome. If any of these tasks appeals to you, please get in contact.

WRITERS WANTED

Yet another regular task that Alison did on *Excalibur* was writing the London WRG column. I hope that LWRG's got somebody else willing to take over that slot. Some more regular columnists could add a bit more life to the magazine. How about a Plan/Nav column? A cartoon from time to time would be welcome, and I'm always on the lookout for suitable photographs. Or whatever you fancy writing, as long as it's got some connection to IWA or the waterways. Book reviews? Once again, if you're interested, please contact me.

IT'S THAT TIME OF YEAR.....

.... when Branch and Region AGMs come round. You should have received a Branch Newsletter that included the notice of your Branch AGM, and the notice of the Region AGM and elections is on the next page. All our Committees are always looking for new recruits. The Region Committee was fortunate this year - we were able to co-opt two people during the year. And there are other jobs that need doing that don't require you to come to regular meetings.

Mike Stevens.

COPY DATES

No. 30	Summer 2000	3 rd June
No. 31	Winter 2000	30 th October
No. 29	Spring 2001	5 th January

The IWA may not agree with opinions expressed in this magazine but encourages publication as a matter of interest. Nothing printed may be construed as policy or an official announcement unless so stated, otherwise the Association accepts no liability for any matter in the magazine. Although every care is taken with advertising, no responsibility whatsoever can be accepted for any matter advertised.

© IWA London Region 2000

Published by the Region at 3 Norfolk Court, Norfolk Road, Rickmansworth, WD3 1LT. Tel : (01923) 711114 Fax (01923) 897000

The Editor reserves the right to edit any article or letter submitted for publication.

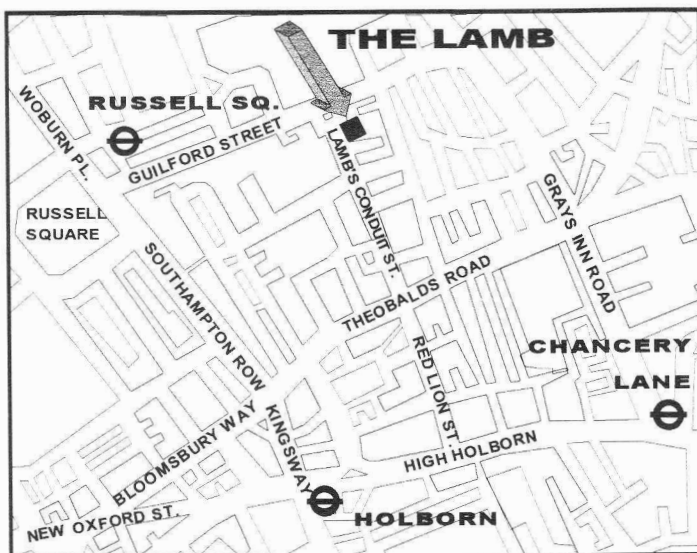
NOTICE OF REGION A.G.M.

Notice is hereby given that the Annual General Meeting of the London Region of the Inland Waterways Association will take place at 8pm on Thursday 13th April 2000 at *The Lamb* Lamb's Conduit Street, WC1. The nearest tube stations are Holborn or Russell Square.

AGENDA

1. Apologies for absence
2. Minutes of the 1999 AGM
3. Matters arising from the Minutes
4. Chairman's Report
5. Report of the Treasurer and presentation of accounts
6. Adoption of accounts
7. Statement of Committee size
8. Election of Committee members
9. Remarks by a member of IWA Council (Nick Grazebrook)
10. Any other business

After the business meeting there will be an up-date on the London's Waterway Partnership SRB project from its Project Manager, Michael Render.



NOTICE OF ELECTION TO THE REGION COMMITTEE

Nominations must be submitted in writing, to be received by Michael Stimpson (address on page 2) by 1st April. Each nomination must carry the names of proposer and seconder, and a signature of the candidate to show that (s)he accepts nomination. Candidates must be paid-up members of IWA and members of the Region at the time of election. Libby Bradshaw, Vernon Draper and Ian Ferguson have completed their 3-year terms of office and are eligible for re-election. Dan Evans and Marcus Jones have been co-opted during the year so also stand down and are eligible for re-election. There will therefore be five vacancies to be filled. Since Libby and Vernon are also ex-officio members of the Committee, if they retain their present offices they will not count against the directly-elected quota.

CANALWAY CAVALCADE 2000 : "Coming of Age"

This year's Canalway Cavalcade will take place, as ever, at Little Venice over the May Day Bank Holiday weekend, Saturday 29th April to Monday 1st May. Because this is the eighteenth year of Canalway Cavalcade, we have decided that this year's theme will be *Coming of Age*.

All the usual activities will be there. The opening ceremony will be at 2pm on the Saturday and will be followed by the pageant of decorated boats. The second pageant, of illuminated boats, will be on Sunday evening. The boat-handling competition will take place at intervals during Sunday and on Monday morning. Bookings for boats and for the Trade Show are flooding in as I write. We are working on our usual programme of theatre, music and dance to entertain you. There will be children's activities, whose climax will be the Teddy Bears' Picnic on Sunday afternoon.

As ever, we are looking for volunteers to help with the event. In particular, at the time of writing, we're looking more people to help with site matters. We also want people help rattle collecting buckets, to help with the Teddy Bears' Picnic and to join the Publicity Team who do the public address commentary and staff the Press Office. Please contact Libby Bradshaw or Mike Stevens if you can offer your help with any of these.

The IWA's exhibition narrowboat, *Jubilee*, will be at the event and we shall need volunteers to staff it and talk about the IWA to members of the public. We've actually got the boat for the whole of week before the event and hope to use it in various ways to publicise both Canalway Cavalcade and the IWA. In particular we want to have the boat in a busy place, somewhere like Camden Lock, during Easter weekend, so we should like volunteers for then as well. If you are willing to help on *Jubilee*, either at the event, over Easter or in between, please contact Mike Stevens (see below).



CANALWAY CAVALCADE CONTACTS

Boats

Allan Scott - (020) 8642 8104

Trade Show

Dorothy Robbie - (020) 8857 6367

Publicity

Mike Stevens - (020) 674 9387
see front cover for more details.

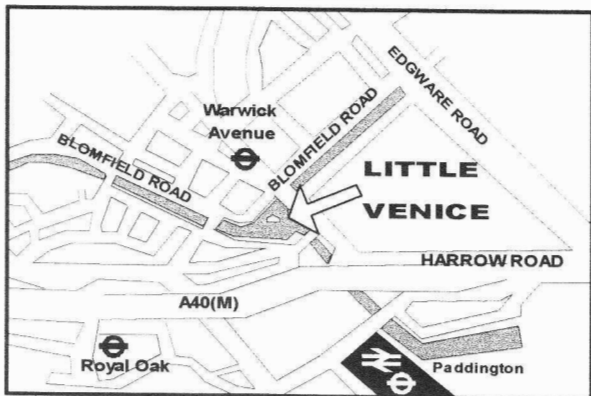
Sponsorship

Adrian Steinkamp - (020) 8402 5848

Cavalcade Chairman

Libby Bradshaw - (020) 8874 2787

HOW TO GET THERE



NEAREST TUBE : Warwick Avenue (Bakerloo line) - 3 minutes' walk

NEAREST B.R.: Paddington (15 minutes' walk or one stop on the tube to Warwick Avenue)

BY BUS : Bus routes 6, 16 & 98 run along Edgware Road. Alight at Blomfield Road and walk alongside the canal (4 minutes' walk)

BY CAR : Parking in the immediate area is not easy, so unless you are prepared for a bit of a walk, you are better advised to park elsewhere and do the last bit of the journey by tube.

From the Region Chairman

As I have been preparing for this year's Branch and Region AGMs I have been reflecting on what has happened in the last year. 12 months ago we were talking about a proposed BW Trust. Whilst that idea was rejected there was extensive consultation during the Autumn about the possible formation of an independent waterway trust, and also the possibility of a BW membership scheme. This latter idea would provide an additional income into BW rather than into the independent trust.

Many feel that a membership scheme, should there be one, should be aimed at the trust. Many favorable responses were received to the trust idea, provided it is truly independent and there is some influence over who is appointed as trustees. The IWA response is available from head office if you wish to see it.

Within the Association we have set up a working group, which is looking at where we are going as an Association and what our priorities should be for the next few years. There are details on page 9 on the story so far and how you can be involved in the consultation process.

The three branches have all been very active this year, but the sudden and untimely death of Alan Russell, chairman of North and East London branch, shocked and saddened us all. Alan had been chairman of the branch since its formation. Cathy, Sarah and James have always been actively involved in the branch and its activities. James edited their branch newsletter at the age of 13/14 last year with the assistance of his father and this year has worked on it again with Roger Wilkinson.

During November we also lost Crystal Hale. The work that she had done for London's canals should not be underestimated. It is thanks to her efforts that we still have City Road Basin. Islington boat club together with the narrowboats *Angel* and *Angel 2* which are now based there are a testament to her hard work to provide facilities from which youngsters can enjoy the canal. Tributes to Alan and Crystal can be found on page 10.

Planning and Navigation issues are, as ever, high on the agenda throughout the region and many of the recent considerations are reported on pages 7 & 8.

Paddington Basin has now begun its redevelopment and we have been invited by the developers to visit the basin in its de-watered state. We do not yet have a date for this but please contact me by 'phone, fax or e-mail if you are interested.

During the past year, as most of you know, I spent a considerable amount of time off work due to a sudden and unexpected illness at the end of April. The first 'casualty' for me of that illness was Canalway Cavalcade which took place at the end of the same week (and was the first one I have ever missed).

Now, nearly a year later, I am at last back at work full time and have been able to resume all my IWA matters. I am indebted to the many people who helped me both personally and by covering my responsibilities during that period of ill health, and to all of you who have helped the Association during the last year.

Libby Bradshaw

ROUTES AND BRANCHES :

Region, Branch & navigation news

THIS IS A CHALLENGE

Well, it's two challenges, actually. Both Middlesex and South London Branches and their season of social meetings in competitive mood, and challenge other Branches and all comers to join in. On Tuesday 13th June Middlesex Branch does this in the form of a Skittles Match, and the following evening South London Branch does it with a Waterways Quiz. In either case, you come as a team, or just turn up and we'll sort teams out on the spot. Details are in the *Waterways Events* pages.

SO'S THIS!

The rebuilding of Bow Locks, the discussions of which have been chronicled here for some time, is now turning into a cross between *Eastenders* and *A Comedy of Errors*. The starting date originally suggested was before Christmas, but this was changed in order that boats going to Docklands for the New Year could use Bow Creek. So work was rescheduled to start very early in the New Year, for completion in time for the "National" at Waltham Abbey over the August Bank Holiday weekend.

At the end of January we received a letter from Paul Kelly, BW's Regional Engineer, telling us that because of *"a delay in appointing a contractor ... due to minor complications with the tender prices"* work wouldn't begin until 7th February and would continue to about 11th September.

The letter continued *"I am aware of the boat festival that will be taking place at Waltham Abbey at the end of August, therefore I wish to advise you that passage through Bow Locks, or disembarking at Three Mills will not be possible before 11th September. Passage from Limehouse to Old Ford along the Limehouse Cut and Lee Navigation will be possible."*

We were at a loss to understand the reference to Three Mills, which we had thought was quite a long way clear of the working area. But enquiries to BW brought the answer that they want to use the towpath from Three Mills to Bow Locks for contractor's access. It strikes us that the

contractors must be using some pretty tiny lorries and equipment if they'll fit under the railway bridge and on the narrow part of the towpath!

It will not surprise you that we are pressing BW to modify these arrangements! Not least because as stated in the letter they would seem to imperil the Three Mills Rally which was due to be organised by our North & East London Branch and St Pancras Cruising Club on the weekend before the "National". On the other hand, some other voices within BW seem to think it will be all right for that Rally to go ahead.

CANALS 2000

This Summer, two convoys of boats will pass the length of the country, linking a major IWA festival in Manchester in June with the "National" at Waltham Abbey in August. They are being organised by *Canals 2000*, a project linked with the larger *Maritime Britain 2000* organisation. Although this is not an IWA event, its organiser is Graeme Heap, a member of our South London Branch, who lives on his barge *Azolla* at South Dock.

One convoy will take a route consisting mainly of narrow waterways, including parts of the BCN. The other is planned to follow broad waterways, with boats being craned out at Market Harborough and in again at Stratford-on-Avon.

Boat owners are encouraged to join the fleet at any stage along the route for all or part of the journey. Details can be obtained from Canals 2000, HMS President (1918), King's Reach, Victoria Embankment, London EC4Y 0HJ.

PLAN/NAV OFFICERS

For some years, Ron Bingham has been Acting Planning Officer of the Plan/Nav Committee as well as Navigation Officer and Liaison Officer. He has now finally found someone to take over the planning job - it has been farmed out to three of us, Sarah Escott for the Middlesex Branch area, Colin Edwards for N&E London and your Editor for South London.

ON THE METREAU : news and

THINGS ARE DEVELOPING

Work has started on the long-awaited development around Paddington Basin. The present stage involves a temporary de-watering of the basin. While the final plan for the development doesn't meet all the criticisms we have voiced at various stages, nevertheless we welcome the way it will bring life back to this hidden bit of waterway.

Another major development, around Limehouse Basin, is now in what looks like its final stage, with buildings going up on the North and West sides of the Basin. Personally, your Editor welcomes the scale (if not the detail) of the new buildings - not unlike that of old warehouses in the area. They give the basin the sense of enclosure which is proper to such places.

The development at Brentford above the Gauging Lock is now accompanied by proposals for the stretch on the Eastern side between Gauging and Thames Locks. These are pretty dire, with considerable loss of both water space and boat-repairing facilities. Plan/Nav Committee is opposing the plans.

A redevelopment alongside the Paddington Branch at Kensal Green includes a proposal for two permanently-moored barges as part of a business. We take the view that the proposal is dangerous as it will obstruct the navigation close to a bend and near a canoe club.

Plan/Nav did, however, support two applications for new mooring pontoons which are now in place, at Sturts Lock on the Regent's, and on Three Mills Wall River, where the old bonded warehouse site now forms the Three Mills Film Studios.

LETTER : BW CONTACTS

25 August 1999

Your newsletter *Excalibur* always makes a good read, if only to note the various spins put on subjects I thought I understood! Some of the information is very useful, particularly phone numbers, address etc.

In return, I'm sure you would welcome accurate information about British Waterways London Region, particularly names, changed 'phone numbers/ faxes etc. Libby's April report to your AGM, which is

reprinted in your Summer issue together with its more recent up-date, contains just a couple of minor errors/omissions which I'm sure your readers may like to take note of in your next update.

Specific points to note are as follows:

- ❖ London Docklands has, since April 1998, been one of three management units within the London Region, along with the Lee & Stort Navigations and the Grand Union/Regent's Canal. It is not managed by Willow Grange.
- ❖ Dennis Fink, as Docklands Manager within the London Region, is responsible for all activities in the Docks and is assisted by a small team.
- ❖ Mark Lloyd, who works out of HQ, continues to provide specialist commercial advice to the Region on major developments and other commercial activities, as in other parts of the country.
- ❖ The customer services team dealing with, amongst other things, craft licensing and mooring enquiries is located within the regional office at Little Venice (Matthew Bannister and Sarah Taylor). Docklands moorings enquiries however are dealt with by the Docklands office (Sue King).
- ❖ Updated Phone/Fax numbers:-

Docklands

(020) 7515 1046 Fax (020) 7538 5537

Dennis Fink - Docklands Manager
Mike Gill - Engineering Supervisor
Sue King - Receptionist / Customer Enquiries

Lee & Stort Navigation

(01992) 788 376 Fax (01992) 788 226

Arthur Saxby - River Manager
Andy Downie - Waterway Supervisor, Upper Lee & Stort
Steve Tanner - Waterway Supervisor, Lower Lee
Paula Gowan - Reception / Customer Enquiries

Grand Union & Regent's Canal

(020) 8571 8900 Fax (020) 8574 1220

Jon Guest - Canal Manager
Tony Coe - Waterways Supervisor, Regent's Canal (including Hertford Union & Limehouse Basin)
Graham Smith - Waterways Supervisor, Grand Union, Paddington Arm & Slough Arm

gossip of London's waterways.

London Region Office

(020) 7286 6101 fax (020) 7286 7306

Mark Bensted - Regional Director
Madge Bailey - Business Development Manager
Bernard Higgins - Engineering Manager
(01923) 208 754

Mike Manuel - Environment Manager

Mark Blackwell - Recreation Manager

Paul Kelly - Regional Engineer

Regards.

Yours sincerely,

Mark Bensted, Regional Director

YOUR EDITOR REPLIES

Thanks, Mark, for the information, which will be of great use. Libby's report printed last time was given to the 1999 AGM and so was her report of 1998. I'm sorry I didn't pick up all the necessary bits in the up-date that followed it.

As for your comment about "spin", you'd hardly expect IWA to agree with BW about everything, now would you?

Mike Stevens

THE NEXT FIVE YEARS FOR THE IWA.

The Region AGM gives you the opportunity to participate at an early stage in consultations that are aimed at defining the objectives and actions of IWA over the next five years.

IWA Council has initiated a round of consultations aimed at producing a Five Year Plan for the Association. The paper assumes broad headings for the fields in which objectives are likely to be set, based upon the Association's long-stated objectives, and suggests those parts of the Association likely to be most concerned with each area.

The current round of consultations is through Region Committees and AGMs. The feed-back from this will inform the drafting of a further document for wider consultation. This later document will consider the actions that need to be taken and timed targets within each objective, to a level of detail of "who will do what and when".

At that later stage, each part of the Plan would need to be sent out to all the parties involved for their opinions and comment. If the plan is to be achieved, those parties who need to do things will need to adopt it and be committed to achieving their targets.

The main headings for the overall objectives are:

The conservation and good maintenance of the existing navigable waterways

The preservation and restoration of waterways that have fallen into dereliction

The development of new waterways and existing waterway systems to meet future use

The education of the public to appreciate the benefits and purposes of waterways

The continued good health and development of the Association

The sound management and efficient administration of the Association

The current consultative document suggests a whole list of sub-headings within these (which will be available at the AGM) and invites comments on:

the overall proposed Plan process

the relative importance of the Objectives so far identified, and

whether any Objectives have been omitted.

The current round of consultation runs until 30 April, although Council will continue to discuss the matter before then.

It's up to you to come and have your say. Do you think such a Plan is a good idea? Is the process for developing it appropriate? Where do YOU think the IWA's priorities should lie between the stated objectives and within them? Are there others that you think equally important?

The formal response at this stage is to be made through the Region, but we need to know what the members think. The AGM is your chance to influence the Plan - if you can't be there, send your views to Libby (address on page 2).

Crystal Hale, 1915 – 1999

In the late 1960s, Crystal Hale, who died on 26 November aged 83, took on the British Waterways Board to save the City Road Basin of the Regent's Canal in Islington. The result of her victory was her founding in 1970 of the Islington Boat Club, used by 7,000 children a year. The Club and narrowboat *Angel of Islington* were the subject of an article in the Summer 1995 edition of *Excalibur*, which was based on information supplied by Crystal.

Crystal was born the eldest daughter of the writer Sir Alan (AP) Herbert, IWA's first President. Her first marriage, to John Pudney the writer and poet, ended in divorce in 1955. She then married Lionel Hale the playwright and broadcaster. Some years later they moved to an Islington house overlooking the Regent's Canal.

Crystal was an obvious god-earth-mother of the Islington chattering classes. Chris Smith, when a young MP, earned her approval, and they continued to hold each other in great affection. Illtyd Harrington remembers meeting

her at a party in 1965 given by Lord Patrick Kinross, when the two of them were introduced to each other as "fellow socialists".

Among Alan Herbert's books is the novel (later a musical), *The Water Gypsies*, about the enchantment of the inland waterways. It was a delight his daughter shared. In 1996 the Royal Yachting Association gave her its award for social achievement on the water. At her own request, her funeral included her last journey through Islington Tunnel by narrowboat. It was a spectacular event.

In 1997, the theme of Canalway Cavalcade was *Roses and Castles*, which was chosen in part to commemorate the 50th anniversary of IWA's major exhibition of canal art and artifacts at Heal's. That exhibition had been opened by Crystal's father, so we were delighted that she was able to be with us to open our event.

London IWA was represented at Crystal's funeral by several of its Officers.

Illtyd Harrington & Mike Stevens

Alan Russell, 1949 - 1999

Alan Russell, Chairman of IWA North & East London Branch, died suddenly at the end of October, aged 50. Alan and his wife Cathy had been Convenors of what started as the Lee Section of IWA's then London Branch in 1993. In 1995 this became the North & East London Branch and Alan was elected as its first Chairman, an office which he held until his death.

Alan was very much a family man, and Cathy worked with Alan on many IWA activities, as did their children, James and Sarah. They were keen boaters in their nb *Aunty Barb* (named after Cathy's mother) and Wendy and I have fond memories of meeting them at many boating events all over the country, including several "Nationals" and the Jubilee Rally at Anglesey Basin, the most

northerly outpost of the BCN. At one time it hardly seemed like a proper rally unless *Aunty Barb* and *Felis Catus II* were moored together somewhere. We first met them in 1991, sharing the Buckby flight of locks with them on the way home from that year's Windmill End "National".

By profession Alan was a sound engineer, a skill that he made use of for Canalway Cavalcade and the Three Mills Rally. We are delighted that James intends to continue the family tradition by helping in that department at this year's Canalway Cavalcade.

James is an accomplished musician and several of his compositions were played at Alan's funeral.

Mike Stevens

BOOK REVIEW

Britain's Waterways - a unique insight

by Brian Roberts

Published by GEO projects at £12.95, 128 pp

This is the latest venture from *GEO projects*, whose *The Thames Ring and London Atlas* we reviewed in our Summer 1998 issue. Like that publication, this one moves away from their well-known sheet map format into a wire-bound book. As always the clarity and quality of their full-colour maps is the book's strongest point.

The book catalogues all the waterways in Great Britain (including the obscure ones). The amount of information given varies from one line for the lesser ones to several pages of text and maps for the more important navigations.

After a brief historical introduction, the book opens with a 2-page index map of the whole system and finishes with a 14-page atlas at 1:700,000 for England and Wales, 1:825,000 for Scotland, and an index.

In between, each of the main waterways is illustrated by a map at 1:350,000 (the Broads and the BCN at 1:250,000). This scale enables nearly all waterways to be seen on at most a two-page spread, with a few exceptions. The Thames takes three pages to show the whole length from the source to below Tilbury, but the Trent & Mersey, Britain's longest canal, fits onto a 2-page spread. Paradoxically for the "Shroppie" (including the Llangollen and the Mont) one has to turn the page to see the whole map, whereas it would have fitted into a single spread.

The maps are accompanied by photographs and informative text, including the basic statistics (length, number of locks, broad or narrow), contacts for the navigation authority, tourist information and relevant restoration projects, a potted history (a little too potted for my taste), trip boats, and a listing of some places of interest, which are keyed to the maps. Many of the waterways also have one or more "short strolls" or longer walks described and mapped at 1:15,000.

When I first opened the book, I wondered what market it was aimed at. It's certainly not a cruising guide (it makes no claim to be one), as the waterway maps aren't detailed enough for that, nor is there any listing of facilities. For individual waterways it sometimes suggests a suitable more detailed guide-book.

But what the maps do well is to show the relationship of the waterways to towns, roads and railways in their area. So the book would be of considerable use to somebody wishing to explore the waterways by car or train.

The maps of suggested walks show a lot of detail and, in conjunction with the detailed commentary, look extremely suitable for their purpose. They include details of how to get there by car or public transport.

I don't think this is a book that experienced boaters will choose to keep on their boats. But a waterway enthusiast who drives around the country might well find it useful to keep a copy in the car. It would also be useful to somebody who is just getting to know the waterways and wants a general introduction to what's where.

Readers may recall that when I reviewed *The Thames Ring and London Atlas* I welcomed *GEO projects*' decision to publish it as a ring-bound book, as opposed to a flat map which is difficult to use on deck while cruising. I spoke to one of their representatives at the "National" this August and heard that they plan similar publications about "the better-known cruising rings" using, as before, the information from their excellent sheet maps. This I regard as good news indeed, as the standard of their maps and information is, in my opinion, the best of any publisher serving the waterways at present.

Mike Stevens

Since writing the above, I have been in contact with Brian Roberts about something else. He tells me that my speculations about who it was aimed at are correct,

Welcome home - to the moorings you've always wanted

Available

Whatever boat you own - be it traditional Narrowboat, GRP Cruiser or classic Wooden Craft - you want to know she's moored on a site about which you can feel proud.

At last you have a choice!

Friendly

Phase One at Willowtree Marina is now complete and we'll be delighted to welcome you.

Receptive

Moorings in West London's newest and brightest purpose-built Marina

The promise of warm and personal service to you, your family and friends

Accessible

An individual berth for your craft and all the facilities demanded by today's discerning Boatowner

Convenient

Ideally positioned right in the middle of the Paddington Arm of the Grand Union Canal

Handy

Large car park with excellent road connections for A40, M4 and M25

Relaxing

Well stocked Chandlery, a slipway and a large modern Engineering Workshop opening soon

Peaceful

Bistro Restaurant and Wine Bar with a range of quality food and drink at affordable prices coming shortly

Rural setting surrounded by green parkland and including a planned Equestrian Centre

For your free brochure containing further details and a mooring application, write to:

**Arthur Bennett
Marina Manager
(Mooring Enquiry IWA1)
Willowtree Marina
West Quay Drive
Yeading Middx UB4 9TB
Tel: 0181 841 6585**

Waterways events in and around London.

See back page for details of venues and contacts for further information.

MARCH

- Tuesday 21st 8pm IWA NORTH & EAST LONDON BRANCH - BRANCH AGM plus *Narrowboat "President"* by Richard Thomas
- Tuesday 21st 7:45 for 8pm IWA HERTS BRANCH - Archive films by Frank Banfield
- Wednesday 22nd 7:30 for 8 pm IWA KENT & EAST SUSSEX BRANCH : BRANCH AGM at *The Bull*, East Farleigh, Maidstone
- Weekend 25th & 26th LONDON WRG - Taking part in the BCN Cleanup.
- Sunday 26th LONDON CANAL MUSEUM - end of temporary exhibition about *the Croydon Canal*
- Tuesday 28th LONDON CANAL MUSEUM - start of temporary exhibition about *Posters of the Canals*. Continues until 25th June.
- Friday 31st 8pm IWA SOUTH LONDON BRANCH AT MOTTINGHAM : *Gunpowder Mills* by Norman Paul

APRIL

- Sunday 2nd 2:30 pm LONDON IWA WITH *LONDON WALKS* - GUIDED TOWPATH WALK : The Regent's Canal, Islington to Mile End. Meet at Angel tube station
- Thursday 6th 7 for 7:30pm LONDON CANAL MUSEUM LECTURE - *Home is where my boat is* by Penny Barber.
- Tuesday 11th 8 pm IWA MIDDLESEX BRANCH : *Rebuilding a waterway* by Mike Palmer
- Wednesday 12th 8pm IWA SOUTH LONDON BRANCH AT SOUTH NORWOOD - *Bats and Canals* by Peter Guest
- Thursday 13th 8pm IWA LONDON REGION CENTRAL LONDON : REGION AGM (See page 4 for details including venue)
- Thursday 13th 7:30pm IWA CHELMSFORD BRANCH : *Canberra to Norway* - classic cruising in the 1990s by John Allen
- Weekend 15th & 16th LONDON WRG Dig on the Wey & Arun.
- Sunday 16th 2:30pm LONDON IWA WITH *LONDON WALKS* - GUIDED TOWPATH WALK : The Regent's Canal, Mile End to Limehouse. Meet at Mile End tube station
- Monday 17th 8 pm IWA GUILDFORD & READING BRANCH : *Woking's waterways heritage* by a speaker from Woking Borough Council.
- Tuesday 18th 8pm IWA NORTH & EAST LONDON BRANCH : *A Victorian Magic Lantern Show* by Aileen Butler.
- Tuesday 18th 7:45 for 8pm IWA HERTS BRANCH : *Progress in supporting the rights of inland navigation* by Chris Coburn

SATURDAY 29th TO MONDAY 1st APRIL - IWA LONDON REGION'S CANALWAY CAVALCADE at Little Venice. See page 5 for details.

MAY

- Thursday 4th 7 for 7:30pm LONDON CANAL MUSEUM LECTURE - *The Regent's Canal yesterday and today* by Dr Michael Essex-Lopresti
- Tuesday 9th 8pm IWA MIDDLESEX BRANCH : *History of the Shropshire Union Canals* by Mike Stevens.
- Thursday 11th 6:30pm LONDON IWA WITH *LONDON WALKS* - GUIDED TOWPATH WALK : The Regent's Canal, Islington to Mile End. Meet at Angel tube station
- Thursday 11th 7:45 for 8pm IWA CHELMSFORD BRANCH : *Waterways Heritage* by Nigel Crowe, BW Heritage Manager
- Weekend 13th & 14th LONDON WRG : Dig on the Barnsley Canal
- Tuesday 16th 8pm IWA NORTH & EAST LONDON BRANCH Speaker to be announced.
- Tuesday 16th 7:45 for 8pm IWA HERTS BRANCH : *Kennet & Avon - the last ten years* by Graham Horn
- Thursday 18th 8pm IWA LONDON REGION CENTRAL LONDON *The Waterway Recovery Group* by Mike Palmer. NB This meeting will be at the London Canal Museum (see back page for address)
- Thursday 25th all day LONDON CANAL MUSEUM *Adult Learners' Day* (as part of *Adult Learners' Week 2000*). Also Welcome Day for *Museums and Galleries Month 2000*. Free admission to the Museum, refreshments and guided introduction.
- Sunday 21st 2:30pm LONDON IWA WITH *LONDON WALKS* - GUIDED TOWPATH WALK : The Regent's Canal, King's Cross to Camden. Meet at King's Cross station, by the taxi rank.
- Thursday 25th 6:30pm LONDON IWA WITH *LONDON WALKS* - GUIDED TOWPATH WALK : The Regent's Canal, Mile End to Limehouse. Meet at Mile End tube station.

JUNE

- Thursday 1st 7 for 7:30pm LONDON CANAL MUSEUM LECTURE : *The world's oldest canal company* by Michael Handford.
- Weekend 3rd & 4th LONDON WRG : Dig on the Wey & Arun
- Sunday 4th 2:30pm LONDON IWA WITH *LONDON WALKS* - GUIDED TOWPATH WALK : The Regent's Canal, Islington to Mile End. Meet at Angel tube station
- Thursday 8th 6:30pm LONDON IWA WITH *LONDON WALKS* - GUIDED TOWPATH WALK : The Regent's Canal, Paddington to Camden. Meet at Warwick Avenue tube station

Thursday 8 th 7:45 for 8pm	IWA CHELSMFORD BRANCH : <i>History of the Waltham Abbey Royal Gunpowder Mills</i> by Normal Paul
Saturday 10 th - all day	IWA SOUTH LONDON BRANCH <i>Waterways for Youth</i> activities at <i>Take Part</i> event, South Norwood Lake. Contact any Branch Committee member for details.
Tuesday 13 th 8pm	IWA MIDDLESEX BRANCH - Skittles evening.
Wednesday 14 th 8pm	IWA SOUTH LONDON BRANCH AT SOUTH NORWOOD - Waterways Quiz.
Thursday 15 th 8pm	IWA LONDON REGION CENTRAL LONDON - Treasure Hunt (Ring Dan Evans for details)
Tuesday 20 th 7:45 for 8pm	IWA HERTS BRANCH : <i>The story of the Mary Rose</i> by John Fisher
Thursday 22 nd 6:30pm	LONDON IWA WITH <i>LONDON WALKS</i> - GUIDED TOWPATH WALK : The Regent's Canal, King's Cross to Camden. Meet at King's Cross station, by the taxi rank.
Sunday 25 th 7pm	LONDON CANAL MUSEUM : Mikron Theatre performance of <i>Don't start from here</i> .
Monday 26 th 8pm	LONDON CANAL MUSEUM : Mikron Theatre performance of <i>Beer Street</i> .
Tuesday 27 th	LONDON CANAL MUSEUM - start of temporary exhibition <i>Fancy a dirty Weekend</i> - the story of WRG. Continues until 22 nd October.

JULY

Weekend 1 st & 2 nd	LONDON WRG - Dig on the Hereford & Gloucester
Sunday 2 nd 2:30pm	LONDON IWA WITH <i>LONDON WALKS</i> - GUIDED TOWPATH WALK : Three Mills and the Bow Back Rivers. Meet at Bromley-by-Bow tube station
Thursday 6 th 7 for 7:30pm	LONDON CANAL MUSEUM LECTURE - <i>The Wild Waterside</i> by Bob Gilbert
Thursday 13 th 6:30pm	LONDON IWA WITH <i>LONDON WALKS</i> - GUIDED TOWPATH WALK : The Regent's Canal, Islington to Mile End. Meet at Angel tube station
Saturday 15 th (evening)	LONDON CANAL MUSEUM : <i>Carlo Gatti's Birthday Party</i> - fund-raising party & barbecue.
Sunday 16 th 2:30pm	LONDON IWA WITH <i>LONDON WALKS</i> - GUIDED TOWPATH WALK : The Regent's Canal, Paddington to Camden. Meet at Warwick Avenue tube station
Weekend 22 nd & 23 rd	LONDON WRG - Dig on the Basingstoke Canal
Thursday 27 th 6:30pm	LONDON IWA WITH <i>LONDON WALKS</i> - GUIDED TOWPATH WALK : The Regent's Canal, Mile End to Limehouse. Meet at Mile End tube station.
Thursday 27 th (all day)	LONDON CANAL MUSEUM - Children's Activity Day

Venue details & contact people

<u>MEETING</u>	<u>VENUE</u>	<u>CONTACT</u>
IWA CENTRAL LONDON	<i>Venues vary - see individual entries</i>	Dan Evans (020) 8560 1798
IWA MIDDLESEX BRANCH	Hillingdon Canal Club, Uxbridge Wharf, Waterloo Rd, Uxbridge	Michael Stimpson (work) (01923) 770425
IWA N & E LONDON BRANCH	Millfield Arts Centre, Silver St., Edmonton, N18, (near the Great Cambridge Rd. junction. $\frac{5}{8}$ mile west of Silver Street BR station).	Tim Lewis (020) 8367 6227
IWA SOUTH LONDON BRANCH (SOUTH NORWOOD)	S.Norwood Conservative Club South Norwood Hill SE25 (Close to Norwood Junction BR) (Please phone to check - venue might change)	Mary Llewellyn (020) 8653 4862
IWA SOUTH LONDON BRANCH (MOTTINGHAM)	<i>The Royal Tavern, Mottingham (corner of Court Rd & Sidcup Rd, close to Mottingham BR).</i>	Neville Munro (01322) 613 428
LONDON IWA / LONDON WALKS TOWPATH WALKS	As listed. Each about 2 hours. £5.00 (concessions £3.50).	London Walks (0120) 7624 3978
LONDON WATERWAY RECOVERY GROUP	Various venues. Meeting point is usually Waterloo Station 7 pm on Friday to travel to site.	Tim Lewis (020) 8367 6227
LONDON CANAL MUSEUM	12 New Wharf Road, King's Cross, London, N1 9RT Opens Tues. to Sun, 10 am - 4:30 pm. Admission £2.50, concessions £1.25 Admission to lectures £2.50, concessions £1.25	(020) 7713 0836
IWA CHELMSFORD BRANCH	Moulsham Mill, Chelmsford	Molly Beard (01702) 554492
IWA CHILTERN BRANCH	Market Hall, Old Amersham	Colin Bird (01932) 249178
IWA GUILDFORD & READING BRANCH	Byfleet Boat Club, The Boat House, 4 Old Parvis Road, Byfleet	Tony Firth (01252) 325831
IWA HERTFORDSHIRE BRANCH	Hatfield Cricket Club, Ascots Lane, Welwyn Garden City	Michael Wright 0727-860137
IWA KENT & EAST SUSSEX BRANCH	Venue varies - see event details	Sid Sharman (01795) 872839